

# UTC-315

## 15.6" Ubiquitous Touch Computer

UTC-315F with 6<sup>th</sup> Gen Intel® Core™ i5/i3 Processor

UTC-315H with 8<sup>th</sup> Gen Intel® Core™ i7/i5/i3 Processor

UTC-315I with 11<sup>th</sup> Gen Intel® Core™ i7/i5/i3 and Celeron 6305E Processor



DeviceOn/iService

### Features

- Low power and fanless system design
- Built in Intel Core™ i5-6300U (UTC-315F), Intel® Core™ i5-8365UE (UTC-315H), and Intel® Core™ i5-1145G7E (UTC-315I)
- 15.6" monitor with 16:9 widescreen display
- IP65-rated front panel for water and dust resistance
- Supports both landscape and portrait screen orientations
- VESA 75 mm standard mounting holes for varied mounting demands
- Detachable frame design for panel mount applications
- Support DeviceOn/iService software for remote device management (UTC-315F only)
- Support TPM 2.0 (UTC-315F/H/I)



### Introduction

UTC-315 is the multi-purpose all-in-one computing system which equipped with wide format, touch based LCD panel. It is easy to integrate key peripherals and display systems for diversified self-service and interactive signage deploy in different application areas. With the removable frame, the system also could fulfill industries or control system applications with panel mounting design. UTC series touch panel computers are the best investments to enhance user satisfaction, further brand equity, and maximize business profits.

Moreover, UTC-315 is equipped with Advantech's DeviceOn/iService software, which is a next-generation unified device management solution based on the WISE-DeviceOn platform. With support for batch operations and multi-device control, DeviceOn/iService enables easy device configuration and deployment for convenient remote device management.

### Specifications

Model	UTC-315F	UTC-315H	UTC-315I	
Processor System	CPU	Intel® Core™ i5-6300U (Default) Intel® Core™ i3-6100U	Intel Core i7-8665UE Intel Core i5-8365UE (Default) Intel Core i3-8145UE	Intel Core i7-1185G7E Intel Core i5-1145G7E (Default) Intel Core i3-1115G4E Intel Celeron 6305E
	Basic Frequency	i5: 2.4 GHz (Dual Core) i3: 2.3 GHz (Dual Core)	i7: 1.70 GHz (Quad-Cores) i5: 1.60 GHz (Quad-Cores) i3: 2.20 GHz (Dual-Cores)	i7: 1.80 GHz (Quad-Cores) i5: 1.50 GHz (Quad-Cores) i3: 2.20 GHz (Dual-Cores) Celeron 6305E: 1.8GHz (Dual-Core)
	Smart Cache	i5: 3MB i3: 3MB	i7: 8 MB i5: 6 MB i3: 4 MB	i7: 12 MB i5: 8 MB i3: 6 MB Celeron 6305E: 4MB
	Memory	1 x 260pin SO-DIMM DDR4 2133 MHz up to 16 GB	1X 260pin SO-DIMM DDR4 2400 MHZ up to 32GB	1 x 260pin SO-DIMM DDR4 3200 MHZ up to 32GB
	HDD	1 x 2.5 internal SATA HDD bay		
	Network	2 x Gigabit Ethernet ports (RJ-45)		
	I/O ports	1 x RS-232 1 x RS-232/422/485 2 x USB 2.0 / 4 x USB 3.0 2 x Gigabit Ethernet (RJ-45) 1 x HDMI 1 x RJ11 (12V output only) Audio Line-out x 1, Mic-in x 1	1 x RS-232 1 x RS-232/485 6 x USB 3.1 2 x Gigabit Ethernet (RJ-45) 1 x HDMI 1 x DP Audio Line-out x 1, Mic-in x 1	1 x RS-232 1 x RS-232/485 2 x USB 2.0 / 4 x USB 3.2 2 x Gigabit Ethernet (RJ-45) 1 x HDMI Audio Line-out x 1, Mic-in x 1
	Stereo Speaker	2Wx2		
	BUS expansion	Full-size MiniPCIe/mSATA	1x M.2 2280/2242 M-Key for NVMe/SATA SSD 1x M.2 2230 E-Key	
	Mounting	VESA 75 x 75; crew Size: M4, 10mm		
Dimension (W x H x D)	402 x 260 x 39.7 mm			
Weight	3.5 kg			
Security	TPM2.0 Support			
OS support	Win 10 IoT Enterprise 64bit Linux		Win 10 IoT Enterprise 64bit Win 11 IoT Enterprise 64bit Linux	

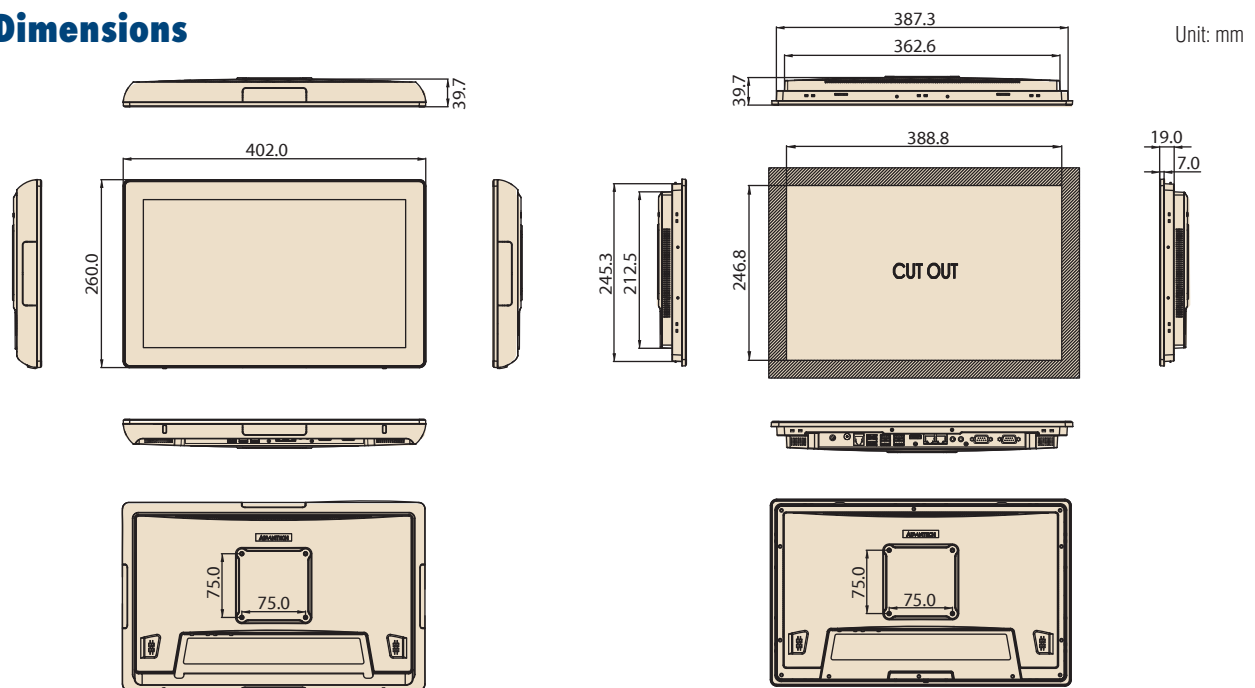
## Specifications (Cont.)

Environmental Specifications	Operating Temperature	0 ~ 40° C (32 ~ 104° F)	
	Relative Humidity	10 ~ 95% @ 40° C non-condensing	
	Vibration	0.5G	
	Shock	10 G peak acceleration (11 msec. duration)	
	EMC/ Safety	CE, FCC, UL, CCC, CB, BSMI, BIS, UKCA	
Power Supply	Front Panel Protection	IP65/ NEMA4 Compliant	
	Input Voltage	12-30V <sub>dc</sub>	
	Power Consumption	Typical 32W, Max. 70W	
LCD Display	Adapter	12V = 7A, 84W or 12V = 8A, 96W ITE adapter (dependent on stock)	
	Size	15.6" TFT LCD	15.6" TFT LCD
	Max Resolution	1366 x 768 (FHD 1920 x 1080 Optional)	1920 x 1080
	Max Color	262K	262K
	Pixel Pitch (um)	252(H) x 252(V)	252(H) x 252(V)
	Brightness (cd/m <sup>2</sup> )	220 (Typical)	220 (Typical)
	View Angle	90° /60° (170°/ 170° Optional)	90°/60° (170°/170°optional)
Touch Screen	Type	Analog Resistive 5-wires (Res. Flat Glass) / Projected Capacitive Touch Panel (Pcap. Flat Glass) / Glass Panel	
	Light Transmission	Res. Touch : 80% ± 5% / P-Cap Touch : 90% ± 2%	
	Controller	COM interface / USB interface	
DeviceOn/iService Remote Device Management	Operating System	Windows 10	
	Common Controls (Reboot, Shutdown)	✓	
	Remote desktop	✓ (VNC)	
	Audio Controls	✓*	
	Connection Status	✓	
	Hardware Status	✓*	
	Hard Disk Status	✓*	
	Batch Operation Support	✓	
	OTA Storage Management	FTP	
	OTA Software Updates	✓	
	Software Watchlist	✓	
	Software Start/Stop	✓*	
	Peripherals Watchlist	✓*	

\*Dependant on device model

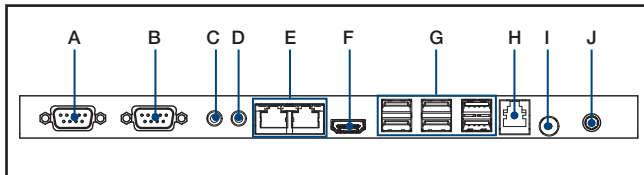
Note: DeviceOn/iService software must be downloaded from the Advantech website at <https://www.advantech.com/search?q=DeviceOn%2FiService&st=support&ssl=Utility>

## Dimensions



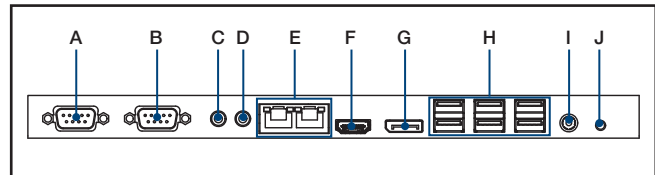
## Fully- Integrated I/O

### UTC-315F



- A. COM1
- B. COM2
- C. Mic in
- D. Line-Out
- E. LAN ports x 2
- F. HDMI
- G. USB 2.0 x 2 / USB 3.0 x 4
- H. RJ11 (12V output only)
- I. Power button
- J. DC input 12-30V

### UTC-315H/I



- A. COM1
- B. COM2
- C. Mic in
- D. Line-out
- E. LAN ports x 2
- F. HDMI
- G. DP (UTC-315H)
- H. USB 3.1 x 6 (UTC-315H)  
USB 2.0 x 2 / USB 3.2 x 4 (UTC-315I)
- I. DC input 12-30V
- J. Power button

## Ordering Information

Part No.	Description
UTC-315FR-ATW0E	15.6" White, Intel® Core™ i5-6300U, Res T/S 4GB RAM, IT Adapter
UTC-315FR-ATB0E	15.6" Black, Intel® Core™ i5-6300U, Res T/S 4GB RAM, IT Adapter
UTC-315FP-ATW0E	15.6" White, Intel® Core™ i5-6300U, PCap T/S 4GB RAM, IT Adapter
UTC-315FP-ATB0E	15.6" Black, Intel® Core™ i5-6300U, PCap T/S 4GB RAM, IT Adapter
UTC-315HR-ATW0E	15.6" White, Intel® Core™ i5-8365UE, Res T/S 8GB RAM, IT Adapter
UTC-315HR-ATB0E	15.6" Black, Intel® Core™ i5-8365UE, Res T/S 8GB RAM, IT Adapter
UTC-315HP-ATW0E	15.6" White, Intel® Core™ i5-8365UE, PCap T/S 8GB RAM, IT Adapter
UTC-315HP-ATB0E	15.6" Black, Intel® Core™ i5-8365UE, PCap T/S 8GB RAM, IT Adapter
UTC-315IR-ATW0E	15.6" White, Intel® Core™ i5-1145G7E, Res T/S 8GB RAM, IT Adapter
UTC-315IR-ATB0E	15.6" Black, Intel® Core™ i5-1145G7E, Res T/S 8GB RAM, IT Adapter
UTC-315IP-ATW0E	15.6" White, Intel® Core™ i5-1145G7E, PCap T/S 8GB RAM, IT Adapter
UTC-315IP-ATB0E	15.6" Black, Intel® Core™ i5-1145G7E, PCap T/S 8GB RAM, IT Adapter
UTC-315IP-ATB1E	15.6" Black, Intel® Core™ i3-1115G4E, PCap T/S 8GB RAM, IT Adapter

\*White Touch Bezel could be customized by customer request with MOQ

### UTC-315 WiFi Ordering Information

Part No.	Description
UTC-300P-W11E	WiFi Kit for UTC-315F (MiniPCIe, WiFi and Bluetooth)
UTC-300P-W12E	WiFi Kit for UTC-315H/I (M.2 2230, WiFi and Bluetooth)
UTC-300P-W13E	WiFi Kit for UTC-315F
UTC-300P-W14E	WiFi Kit for UTC-315H/I

### Installation Accessory

Part No.	Description
UTC-300P-D10E	Desk Stand, Single Color-Silver (UTC-315 series)
UTC-T01-STANDE	Triangle shape floor stand (UTC-315/UTC-318/UTC-320 series)
UTC-H01-STANDE	H-shaped floor stand (UTC-315/UTC-318/UTC-320 series)
UTC-PANEL-MOUNT6E	Panel mount Kit (UTC-315 series)
ARES-12240-AR01100	Wall Mount Kit, support 2~10kg, VESA 75/100mm (Tilttable)
ARES-12250-L101000	Wall Mount Kit, Max. support 25kg, VESA 75/100mm (Fixed)

### Peripherals for UTC-300 series

Part No.	Description
UTC-300P-C20E	5M Camera Module, White, for UTC-300 series
UTC-300P-C21E	5M Camera Module, Black, for UTC-300 series
UTC-300P-M20E	Magnet Strip Reader, White, for UTC-300 series
UTC-300P-M21E	Magnet Strip Reader, Black, for UTC-300 series
UTC-300P-R20E	RFID Reader, White, for UTC-300 series
UTC-300P-R21E	RFID Reader, Black, for UTC-300 series
UTC-300P-S20E	Smart Card Reader, White, for UTC-300 series
UTC-300P-S21E	Smart Card Reader, Black, for UTC-300 series
UTC-300P-B60E	2D Barcode Reader, White for UTC-300 series
UTC-300P-B61E	2D Barcode Reader, Black for UTC-300 series

### Power Cord Ordering Information

Part No.	Description
1702002605	Power cord 2P FRANCE 10A/16A 220V 1.83M 90D
1702002600	Power Cord 3P UL/CSA(USA) 125V 10A 1.83M 180D
1700000596-11	Power Cord (China) CCC, 10A 250V, 3P 1830mm
1700018704	Power Cord UK BSI 2P 10A 250V 180cm 18AWG
1700000237	Power Cord PSE 3P 12A 125V 183cm
1700001714	Power Cord BSMI 3P 7A 125V 183cm

# DeviceOn/iService

## Unified Remote Device Management Software



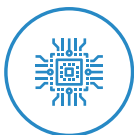
### Features

- Supports Advantech devices equipped with Windows, Android, and Linux OS
- Flexible device, location, user, and permissions management
- Enables remote monitoring and control of hardware, software, and peripherals
- Supports over-the-air (OTA) firmware and software updates
- Ensures quick, easy, and secure device onboarding
- RESTful APIs for third-party system integration

### Introduction

Advantech's DeviceOn/iService is a next-generation unified device management solution based on the WISE-DeviceOn platform. Designed to enable centralized monitoring and remote management, DeviceOn/iService supports Advantech devices equipped with Windows, Linux, or Android operating systems. The software also supports the management of applications and integrated peripherals, such as a barcode scanner, card reader, camera, and printer. Users can remotely access and control connected devices, take screenshots, rollout OTA upgrades, and use remote desktop capabilities for troubleshooting from any location at any time. Moreover, DeviceOn/iService supports batch operations to facilitate the management of multiple devices simultaneously for easy and convenient device configuration and deployment.

### Total Management



#### Devices & Hardware

- Windows, Linux, Android
- Hardware, storage, battery



#### Software & Peripherals

- Software monitoring & access
- Screens, USB devices, printers



#### Open for Expansion

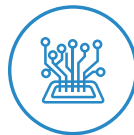
- Peripheral integration
- Open APIs for integration

### Remote Access



#### Real-Time Monitoring

- Connection/hardware status
- Software/peripheral status
- Failure notifications



#### Remote Controls

- Power controls
- Audio, backlight controls
- Software controls



#### Troubleshooting

- Screenshots
- Remote desktop support

### Operational Efficiency



#### OTA updates

- System/software updates
- File repository management
- App store



#### Batch Controls

- 1-to-many batch reboot, etc.
- Time-saving tasks



#### Setup Booster

- Software/peripheral watchlist
- Roles, rule templates

Note: Some functions may vary according to the product

### System Architecture

