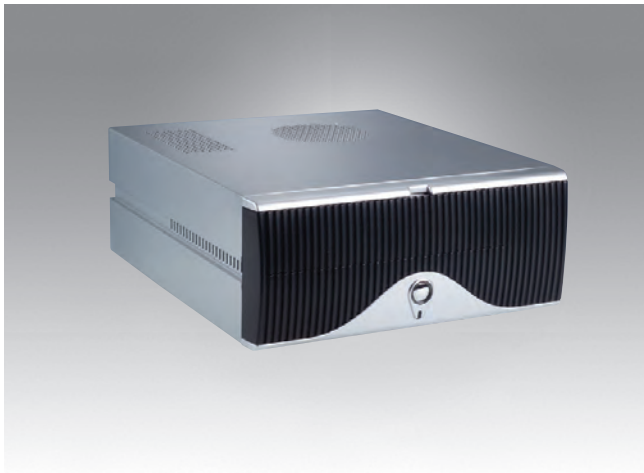


# AIMB-C600

## Economical Desktop Chassis for MicroATX Motherboard



### Features

- Economical desktop chassis for MicroATX motherboard
- Supports four expansion slots
- Supports one 5.25" ODD and two 3.5" HDD
- Front-accessible dual USB 2.0
- Equipped with 300 W SFX power supply

### Specifications

Drive Bay	5.25" Optical Drive	1 (front-accessible)
	3.5"	2 (one front-accessible, one internal)
Cooling	Fan	1 (6 cm / 17 CFM)
I/O Interface	USB	2
Miscellaneous	Expansion Slots	4
	Front Panel Control	Power button
Power Supply	Power Output Wattage	300 W
	Input Range	AC 100 ~ 127 V / 200 ~ 240 V (selectable)
	Output Voltage	+12 V @ 14.5 A, +5 V @ 18 A, +5 Vsb @ 2 A, +3.3 V @ 18 A, -12 V @ 0.4 A
Physical Characteristics	Dimensions (W x H x D)	329.6 x 136 x 379.2 mm (129.8" x 53.5" x 149.3")
	Weight	4.6 kg (10.1 lb)

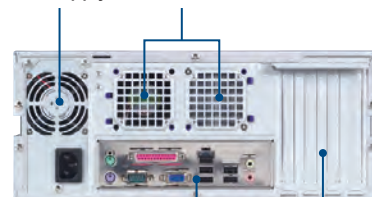
### Front View



Power button with LED

### Rear View

300 W Power Supply      One 6 cm fan and a reserved space for the second fan

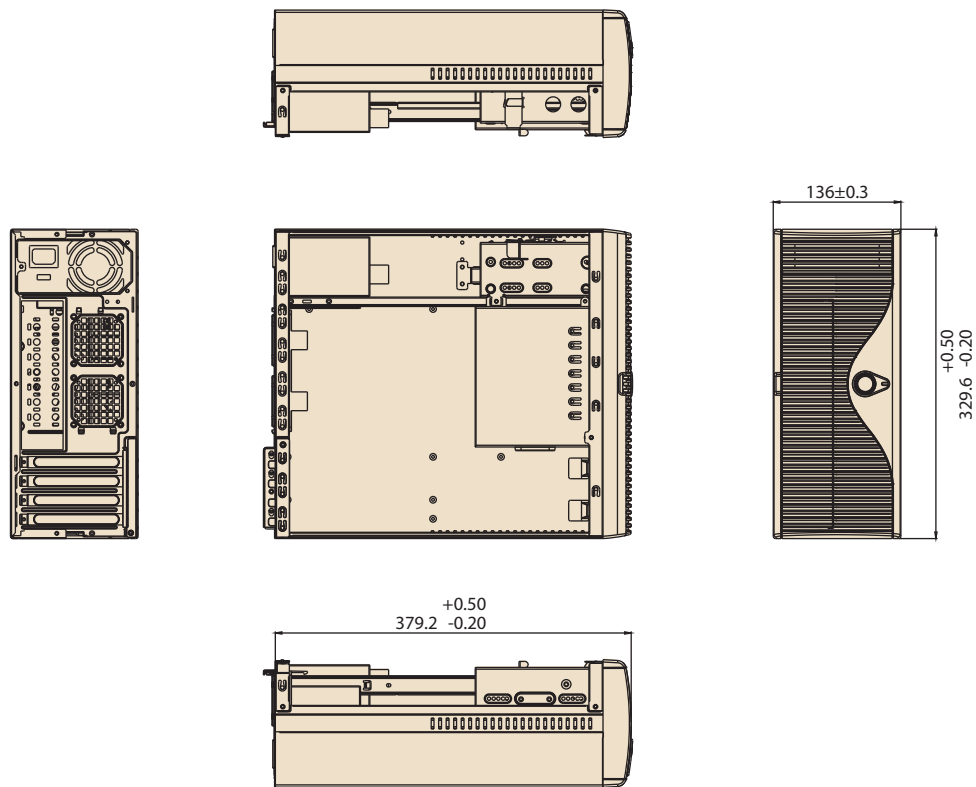


Supports standard MicroATX rear I/O shield

4 expansion slots

**Dimensions**

Unit: mm



**Ordering Information**

Part Number	Description
AIMB-C600-00A1E	Economical desktop MicroATX chassis with 300W power supply