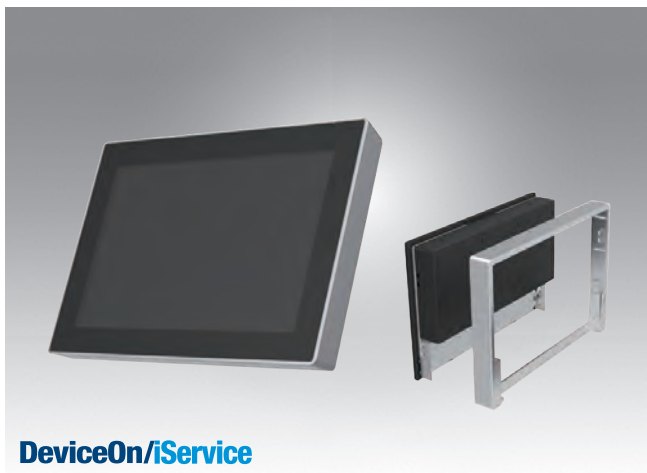


# UTC-510 (PoE)

## 10.1" Ubiquitous Touch Computer UTC-510D with Intel® Celeron® N2807 / J1900



DeviceOn/iService

### Features

- Low Power & Fanless design
- Built-in Intel® Celeron® N2807 / J1900 (UTC-510D)
- Providing Natural Viewing Experience with 16:10 10.1" Display
- Landscape & Portrait screen mode support by different applications
- VESA 75 mm standard mounting holes for varied mounting demands
- Detachable plastic frame design for panel mount applications
- POE supported on Celeron N2807/J1900 platform
- Support DeviceOn/iService software for remote device management



### Introduction

UTC-510 features an all-in-one computing system equipped with wide format, touch based LCD panel. It is easy to integrate key peripherals and display systems for diversified self-service and interactive signage deploy in different application areas. The systems deliver updated information with well-designed interactive interfaces, fully ensure relevant content and targeted promotions are delivered. UTC series touch panel computers are the best investments to enhance user satisfaction, further brand equity, and maximize business profits. Moreover, Advantech DeviceOn/iService Software is a next-generation unified device management unified device management solution based on the WISE-DeviceOn platform. With support for batch operations and multi-device control, DeviceOn/iService enables easy device configuration and deployment for convenient remote device management.

### Specifications

|                              |                                 |   |   |
|------------------------------|---------------------------------|---|---|
| Processor System             | CPU                             | Intel® Celeron® N2807 (UTC-510DP)                 | Intel® Celeron® J1900 (UTC-510DP)             |
|                              | Base Frequency                  | 1.58 GHz (Dual-Core)                              | 2 GHz (Quad-Core)                             |
|                              | Cache                           | L2 Cache 1MB                                      | L2 Cache 2MB                                  |
|                              | Memory                          | 1 x 204 pin SO-DIMM DDR3L 1333 MHz up to 8 GB     | 1 x 204 pin SO-DIMM DDR3L 1333 MHz up to 8 GB |
|                              | HDD                             | 1 x 2.5 internal SATA HDD bay                     |   |
|                              | Network (LAN)                   | 2 x Gigabit Ethernet ports (Supports Wake on LAN) |   |
|                              | I/O ports                       | 2 x RS-232 COM (COM2 RS-422/485 supported)*       |   |
|                              |                                 | 3 x USB 2.0, 1 x USB 3.0                          |   |
|                              | Stereo Speaker                  | 1 x HDMI  |   |
|                              |                                 | 2 x Gigabit Ethernet ports (1 with POE)           |   |
|                              | Headphone with MIC              | 1 x Headphone with MIC                            |   |
| Stereo Speaker               | 2 W x 2                         |   |   |
| Bus expansion                | 1 Full size MiniPCIe/mSATA      |   |   |
|                              | 1 Half size MiniPCIe            |   |   |
| Mounting                     | VESA 75 x 75 mm                 |   |   |
| Dimensions (W x H x D)       | 265.40 x 182.40 x 39.55 mm      |   |   |
| Weight                       | 1.80 kg (3.97 lbs)              |   |   |
| OS Support                   | WES7P 64bit                     |   |   |
|                              | Windows Pro Embedded 7 64bit    |   |   |
|                              | Windows POSReady7 32bit         |   |   |
|                              | Win 10 IoT Enterprise 64bit     |   |   |
|                              | Linux Ubuntu 14.04              |   |   |
|                              | Android 6.0                     |   |   |
| Environmental Specifications | Operating Temperature           | 0 ~ 40° C (32 ~ 104° F)                           |   |
|                              | Relative Humidity               | 10 ~ 95% @ 40° C non-condensing                   |   |
|                              | Vibration                       | 1G*   |   |
|                              | Shock                           | 5G peak acceleration (11 msec. duration)          |   |
|                              | Certification                   | CE (No RED certification), FCC, CB, UL, CCC, BSMI |   |
| Power Supply                 | POE                             | IEEE 802.3at/30W                                  |   |
|                              | Power consumption               | Typical 10W<br>Max. 20W                           |   |
| LCD Display                  | Size/Type                       | 10.1" TFT LCD with LED backlight                  |   |
|                              | Max. Resolution                 | 1280 x 800  |   |
|                              | Max. Color                      | 16.7M   |   |
|                              | Pixel Pitch (um)                | 169.5 x 169.5                                     |   |
|                              | Brightness (cd/m <sup>2</sup> ) | 350   |   |
|                              | View Angle                      | 170 / 170   |   |
|                              | Camera                          | 5 Mega Pixel (Optional)                           |   |
| Touch Screen Option (PE/GE)  | Type                            | Projected Capacitive. Glass Panel                 |   |
|                              | Light Transmission              | 80% ± 5% / 90%                                    |   |
|                              | Controller                      | USB Interface / -                                 |   |

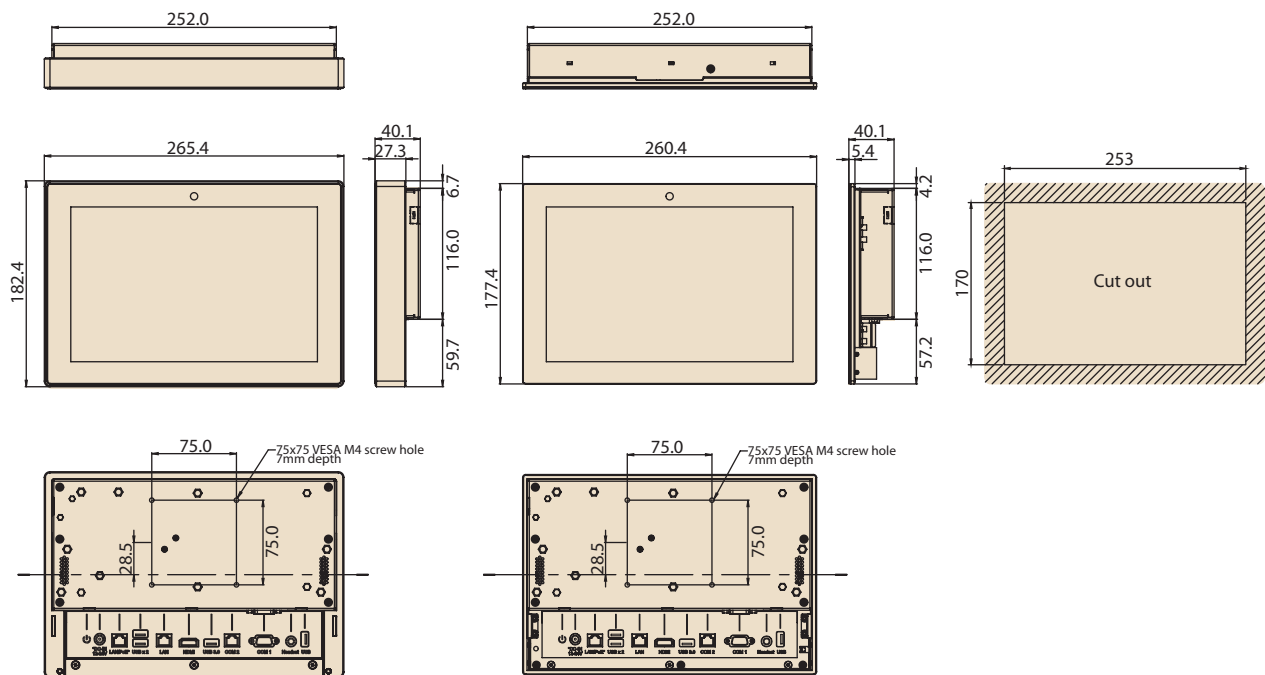
## Specifications (Cont.)

|   |                                    |                       |
|---|------------------------------------|-----------------------|
| DeviceOn/iService<br>Remote Device Management | Operating System                   | Windows 10            |
|   | Common Controls (Reboot, Shutdown) | ✓                     |
|   | Remote desktop                     | ✓ (VNC)               |
|   | Audio Controls                     | ✓*                    |
|   | Connection Status                  | ✓                     |
|   | Hardware Status                    | ✓*                    |
|   | Hard Disk Status                   | ✓*                    |
|   | Batch Operation Support            | ✓                     |
|   | OTA Storage Management             | FTP                   |
|   | OTA Software Updates               | ✓                     |
|   | Software Watchlist                 | ✓                     |
|   | Software Start/Stop                | ✓*                    |
|   | *Dependant on device model         | Peripherals Watchlist |

Note: DeviceOn/iService software must be downloaded from the Advantech website at <https://www.advantech.com/search/?q=DeviceOn%2FiService&st=support&sst=Utility>

## Dimensions

Unit: mm



## Ordering Information

| Part No.        | Description   |
|-----------------|---|
| UTC-510DP-APB0E | 10.1" Intel Celeron N2807 Based fanless UTC with PCT.T/S 4GB RAM, PoE |
| UTC-510DP-APB1E | 10.1" Intel Celeron J1900 Based fanless UTC with PCT.T/S 4GB RAM, PoE |
| 1700001524      | Power Cord 3P UL 10A 125V 180cm                                       |
| 170203180A      | Power Cord 3P UK 2.5A/3A 250V 1.83M                                   |
| 170203183C      | POWER Cord 3P Europe (WS-010+WS-083)183cm                             |
| 1700021374-01   | Power Cord 3P CCC 2.5A 250V 250cm (IEC60320-C5)                       |
| 1960073820N101  | IO Cover UTC-510  |
| 1931031500      | Screws for IO Cover UTC-510(*2)                                       |

## Peripherals for UTC-510 series

| Part No.      | Description   |
|---------------|---|
| UTC-510P-B03E | 2D Barcode Scanner - Honeywell N3680 For UTC-510 (USB connection) |
| UTC-510P-F01E | Finger Print Reader For UTC-510 (USB connection)                  |
| UTC-510P-R01E | RFID Reader For UTC-510 (USB connection)                          |
| UTC-510P-M01E | Magnet Strip Reader For UTC-510 (USB connection)                  |
| UTC-510P-S01E | Smart Card Reader For UTC-510 (USB connection)                    |

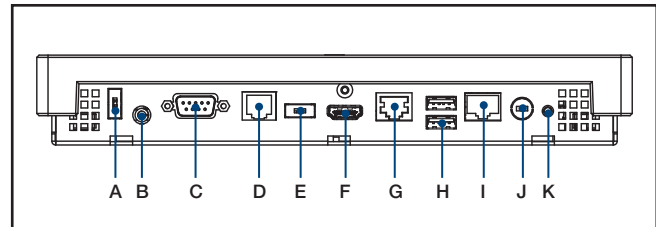
## Installation Accessory

| Part No.           | Description                            |
|--------------------|--|
| UTC-WALL-MOUNT5E   | UTC-510 VESA mount (75 x 75)           |
| UTC-510-STAND0E    | UTC-510 desktop stand                  |
| 1960086099N000     | UTC-510 (PoE) Panel Mount Clamper (*4) |
| 1930005598         | UTC-510 Panel Mount Screw (*4)         |
| ARES-2414X-S150201 | Table Stand, 75x75mm                   |

## WiFi ordering information for UTC-510(PoE) series

| Part No.      | Description  |
|---------------|--|
| UTC-510PW-A0E | 510(PoE), EWM-W172, 802.11ac/a/b/g/n, 2T2R, BT4.2HMC |
| UTC-510PW-A1E | 510(PoE), EWM-W193, 802.11ac/a/b/g/n, 2T2R, BT5.0HMC |
| UTC-510PW-A2E | 510(PoE), EWM-W189, 802.11ac/a/b/g/n, 2T2R, BT4.2HMC |

## Fully- Integrated I/O



- A. USB 2.0\* (DC version only)
- B. Headset
- C. COM1
- D. COM2
- E. USB 3.0\* (DC version only)
- F. HDMI
- G. LAN Ports
- H. USB 2.0 x 2
- I. LAN/PoE Ports
- J. DC Power jack (DC version only)
- K. Power switch

\* UTC-510 (PoE) – A PoE Powered Device (PD) is a device powered by a PSE and thus consumes energy. Please do take a Power sourcing equipment (PSE) which follows IEEE 802.3at PoE standard, also known as PoE+ or PoE plus, provides up to 30W of DC power output. Only 25.5 W input is assured to be available at the powered device as some power dissipates in the cable. For Standard UTC-510 PoE Version, 1 x USB 2.0 (A port) and 1 x USB 3.0 (E port) are not suggested to use. The customer can change the configuration only when total power input is under 25.5 W.

# DeviceOn/iService

## Unified Remote Device Management Software



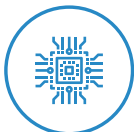
### Features

- Supports Advantech devices equipped with Windows, Android, and Linux OS
- Flexible device, location, user, and permissions management
- Enables remote monitoring and control of hardware, software, and peripherals
- Supports over-the-air (OTA) firmware and software updates
- Ensures quick, easy, and secure device onboarding
- RESTful APIs for third-party system integration

### Introduction

Advantech's DeviceOn/iService is a next-generation unified device management solution based on the WISE-DeviceOn platform. Designed to enable centralized monitoring and remote management, DeviceOn/iService supports Advantech devices equipped with Windows, Linux, or Android operating systems. The software also supports the management of applications and integrated peripherals, such as a barcode scanner, card reader, camera, and printer. Users can remotely access and control connected devices, take screenshots, rollout OTA upgrades, and use remote desktop capabilities for troubleshooting from any location at any time. Moreover, DeviceOn/iService supports batch operations to facilitate the management of multiple devices simultaneously for easy and convenient device configuration and deployment.

### Total Management



#### Devices & Hardware

- Windows, Linux, Android
- Hardware, storage, battery



#### Software & Peripherals

- Software monitoring & access
- Screens, USB devices, printers



#### Open for Expansion

- Peripheral integration
- Open APIs for integration

### Remote Access



#### Real-Time Monitoring

- Connection/hardware status
- Software/peripheral status
- Failure notifications



#### Remote Controls

- Power controls
- Audio, backlight controls
- Software controls



#### Troubleshooting

- Screenshots
- Remote desktop support

### Operational Efficiency



#### OTA updates

- System/software updates
- File repository management
- App store



#### Batch Controls

- 1-to-many batch reboot, etc.
- Time-saving tasks



#### Setup Booster

- Software/peripheral watchlist
- Roles, rule templates

Note: Some functions may vary according to the product

### System Architecture

