

BVS CA-BN2-xxxxxx-(1)(2)(3)(4)(5)(6)-001 / BVS  
CA-BN4-xxxxxx-(1)(2)(3)(4)(5)(6)-001

BVS CA-BN2-xxxxxx-(1)(2)(3)(4)(5)(6)-001 / BVS CA-BN4-  
xxxxxx-(1)(2)(3)(4)(5)(6)-001  
PCI Express industrial camera

xxxxxx Model  
See table below

(1) Handling  
1 = standard handling

(2) Lensholder  
1 = C-Mount, Type2, with high durability and factory-set  
backfocus, fixed square filter  
5 = C-Mount, Type3 (low cost, factory-set backfocus, Ø23.2  
mm Filter)

(3) Filter  
0 = without filter  
1 = IR-Cut  
2 = glass filter  
More filters on request

(4) Housing  
1 = standard housing, black with logo, aluminium

(5) I/O  
1 = standard I/Os

(6) Software  
0 = none

Industrial Cameras  
BVS CA-BN - Standard



Model name	Resolution	FPS*	Sensor	Pixel size	Power**
BVS CA-BN2-					
0016ZG/C	1.6 MP (1456 x 1088)	226.5/226.5	IMX273 (1/2.9", GS, CMOS)	3.45 µm	3.4 W
0032ZG/C	3.2 MP (2064 x 1544)	191.5/191.5	IMX252 (1/1.8", GS, CMOS)	3.45 µm	4.0 W
0051ZG/C	5.1 MP (2464 x 2056)	140/140	IMX250 (2/3", GS, CMOS)	3.45 µm	4.0 W
0089ZG/C	8.9 MP (4096 x 2176)	88.7/88.7	IMX255 (1", GS, CMOS)	3.45 µm	4.5 W
0124ZG/C	12.4 MP (4096 x 3008)	64.6/64.6	IMX253 (1.1", GS, CMOS)	3.45 µm	4.5 W
0246AG/C	24.6 MP (5328 x 4608)	24.1/24.1	IMX540 (1.2", GS, CMOS)	2.74 µm	4.0 W
BVS CA-BN4-					
0051BG/C	5.1 MP (2464 x 2064)	234.0/234.0	IMX537 (1/1.8", GS, CMOS)	2.74 µm	tbd W
0081ZG/C	8.1 MP (2848 x 2848)	152.5/152.5	IMX536 (2/3", GS, CMOS)	2.74 µm	tbd W
0124BG/C	12.4 MP (4128 x 3008)	104.5/104.5	IMX535 (1/1.1", GS, CMOS)	2.74 µm	tbd W
0162ZG/C	16.2 MP (5328 x 3040)	82.8/82.8	IMX532 (1.1", GS, CMOS)	2.74 µm	tbd W
0204ZG/C	20.4 MP (4512 x 4512)	66.0/66.0	IMX531 (1.1", GS, CMOS)	2.74 µm	tbd W
0246ZG/C	24.6 MP (5328 x 4608)	55.5/55.5	IMX530 (1.2", GS, CMOS)	2.74 µm	tbd W
<i>G/C = Mono and color available</i>					
<i>FPS = Frames per Second</i>					
<i>GS = Global Shutter</i>					
<i>RS = Rolling Shutter</i>					
<i>* = Burst Mode/Streaming</i>					
<i>** = Typical value</i>					

## Basic features

---

<b>Standards</b>	EMVA 1288 GenICam
------------------	----------------------

## Electrical connection

---

<b>Short-circuit protection</b>	no
---------------------------------	----

## Electrical data

---

<b>Current draw peak</b>	1.8 A
<b>Operating voltage <math>U_b</math></b>	5...12 VDC
<b>Ripple max. (% of <math>U_e</math>)</b>	5 %

## Environmental conditions

---

<b>Ambient temperature</b>	0...45 °C
<b>IP rating</b>	IP30
<b>Relative humidity</b>	20...80%
<b>Storage temperature</b>	-20...60 °C

## Functional Characteristics

---

<b>Binning</b>	Horizontal and vertical
<b>Decimation</b>	Horizontal and vertical
<b>Exposure time</b>	10 $\mu$ s...20 s *
<b>Filter</b>	IR cut filter, other filters on request
<b>Image formats</b>	Mono8...Mono16 Bayer8...Bayer16 *
<b>Trigger Modi</b>	Free run Hardware trigger Software trigger

## Interface

---

<b>Digital inputs</b>	4x PNP
<b>Digital outputs</b>	4x PNP
<b>Interface</b>	PCIe
<b>Switching function</b>	normally open (NO)

## Material

---

<b>Housing material</b>	Aluminium, Anodized
-------------------------	---------------------

## Mechanical data

---

<b>Lens mount</b>	C-Mount, other types on request
<b>Weight</b>	71 g

## Remarks

---

Not included in scope of delivery: Camera lens, light, connection cable, power supply

\* Refer to manual for exact values

For more information about MTTF and B10d see MTTF / B10d Certificate

Indication of the MTTF- / B10d value does not represent a binding composition and/or life expectancy assurance; these are simply experiential values with no warranty implications. These declared values also do not extend the expiration period for defect claims or affect it in any way.

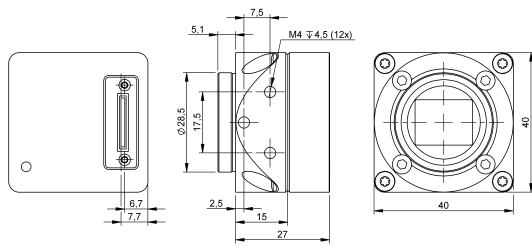
### Connector Diagramm

PCIe-Embedded (Power, IO, UART,  
 I<sup>2</sup>C) (PCIe-Embedded interface)



### Product View

BVS CA-BN2-xxxxxx-x1x110 / -x5x110



Threads: 12 (-x1x110)

BVS CA-BN4-xxxxxx-x1x510 / -x5x510

